



RETAIL/OFFICE INVESTMENT

7208 Wornall Road, Kansas City, Missouri

\$325,000 PRICE REDUCTION!




SALE PRICE: \$1,500,000 | 12,000 SF BUILDING

DEMOGRAPHICS

	1 mile	3 miles	5 miles
Estimated Population	14,651	101,828	246,063
Avg. Household Income	\$168,077	\$157,189	\$123,821

- Mixed use building
- Office
- Retail
- Long term retail tenants
- New roof in 2019
- Second floor buildout in 2018

 [CLICK HERE TO VIEW MORE LISTING INFORMATION](#)

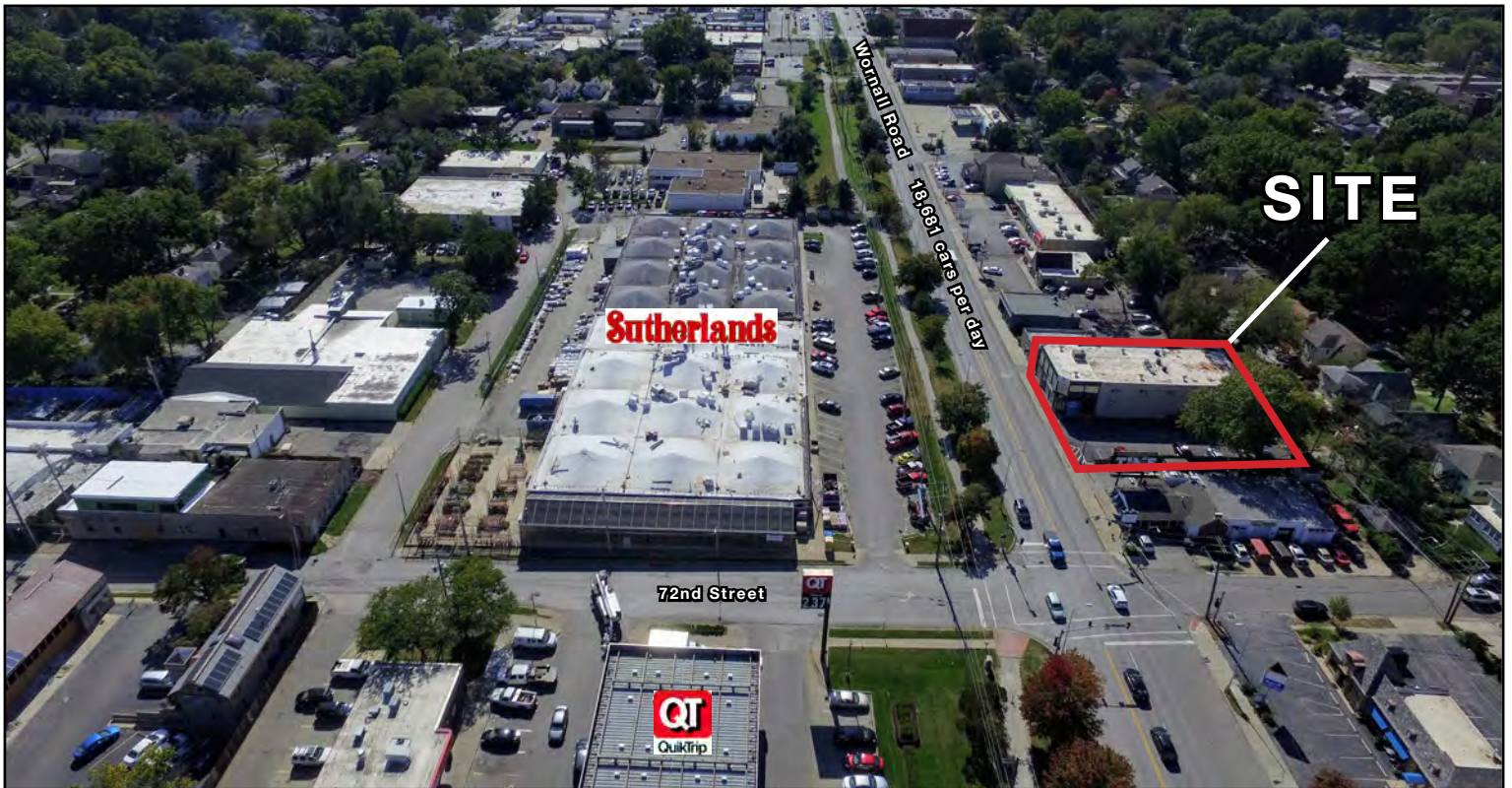
For More Information Contact:

MARSHAL BLOUNT | 816.412.7342 | mblount@blockandco.com

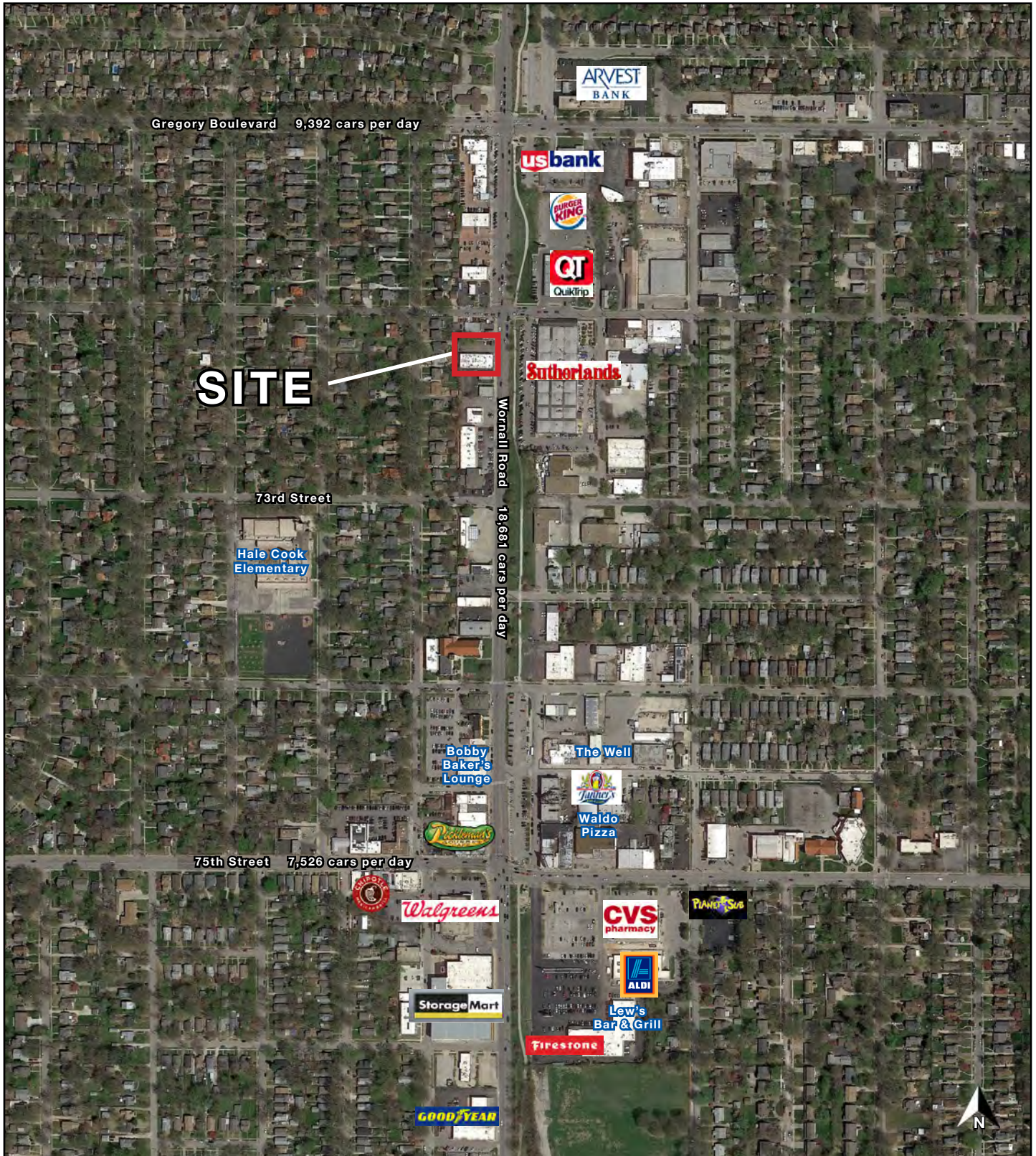
Exclusive Agent



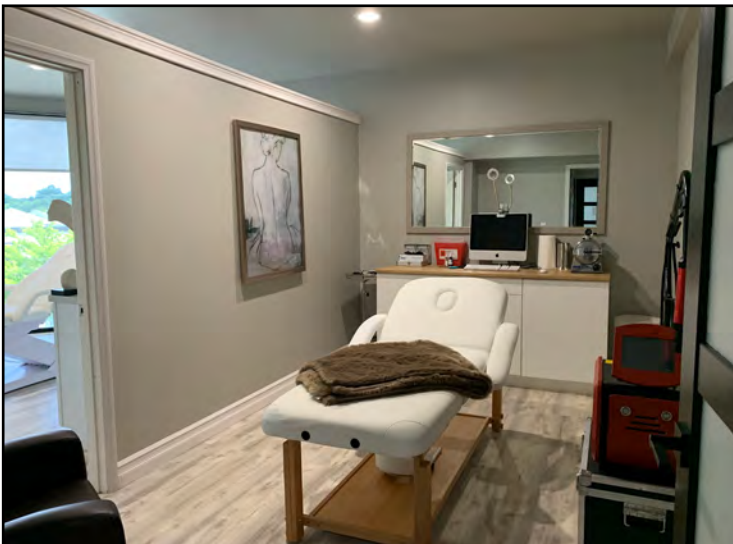
DRONE PHOTOS

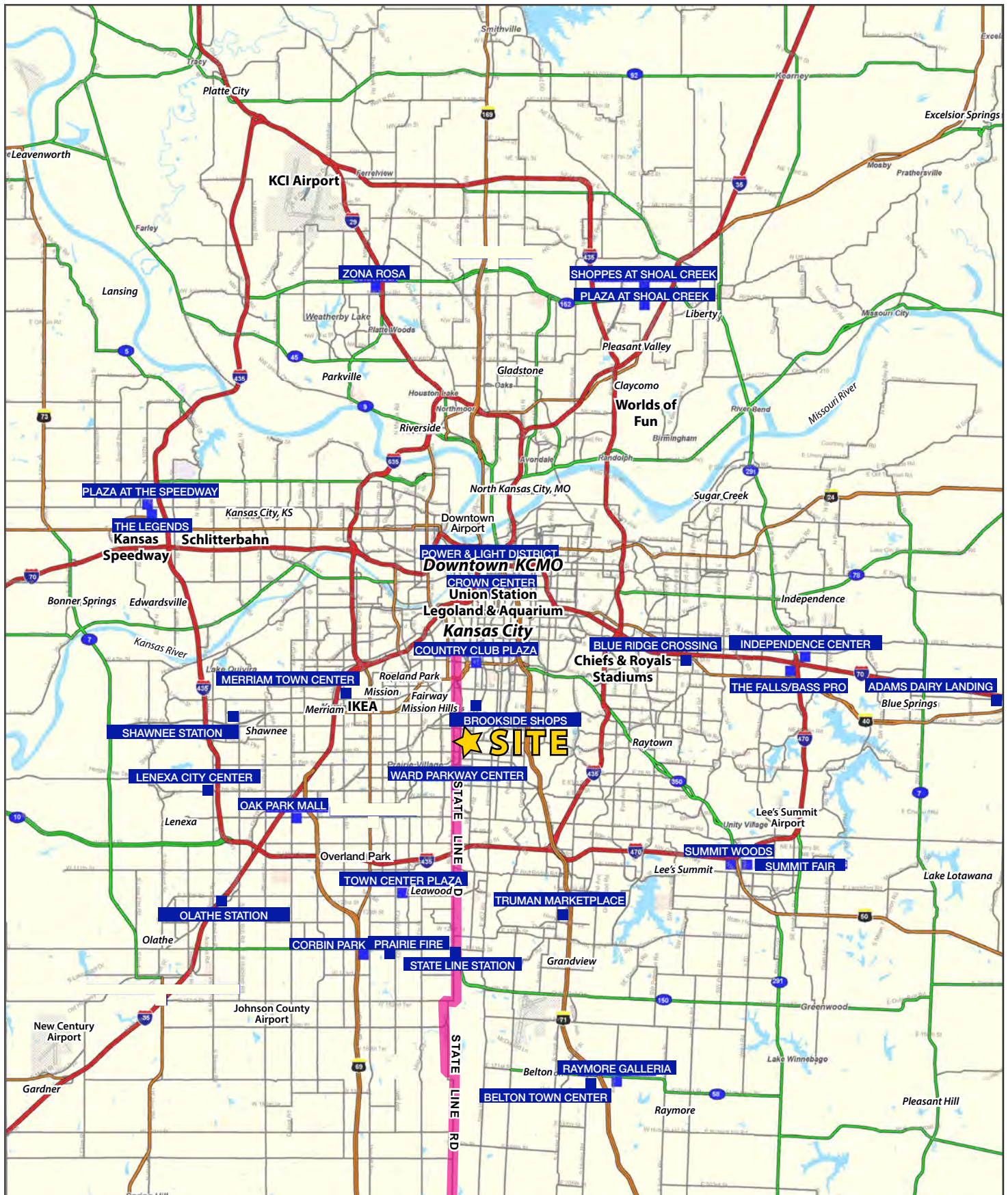


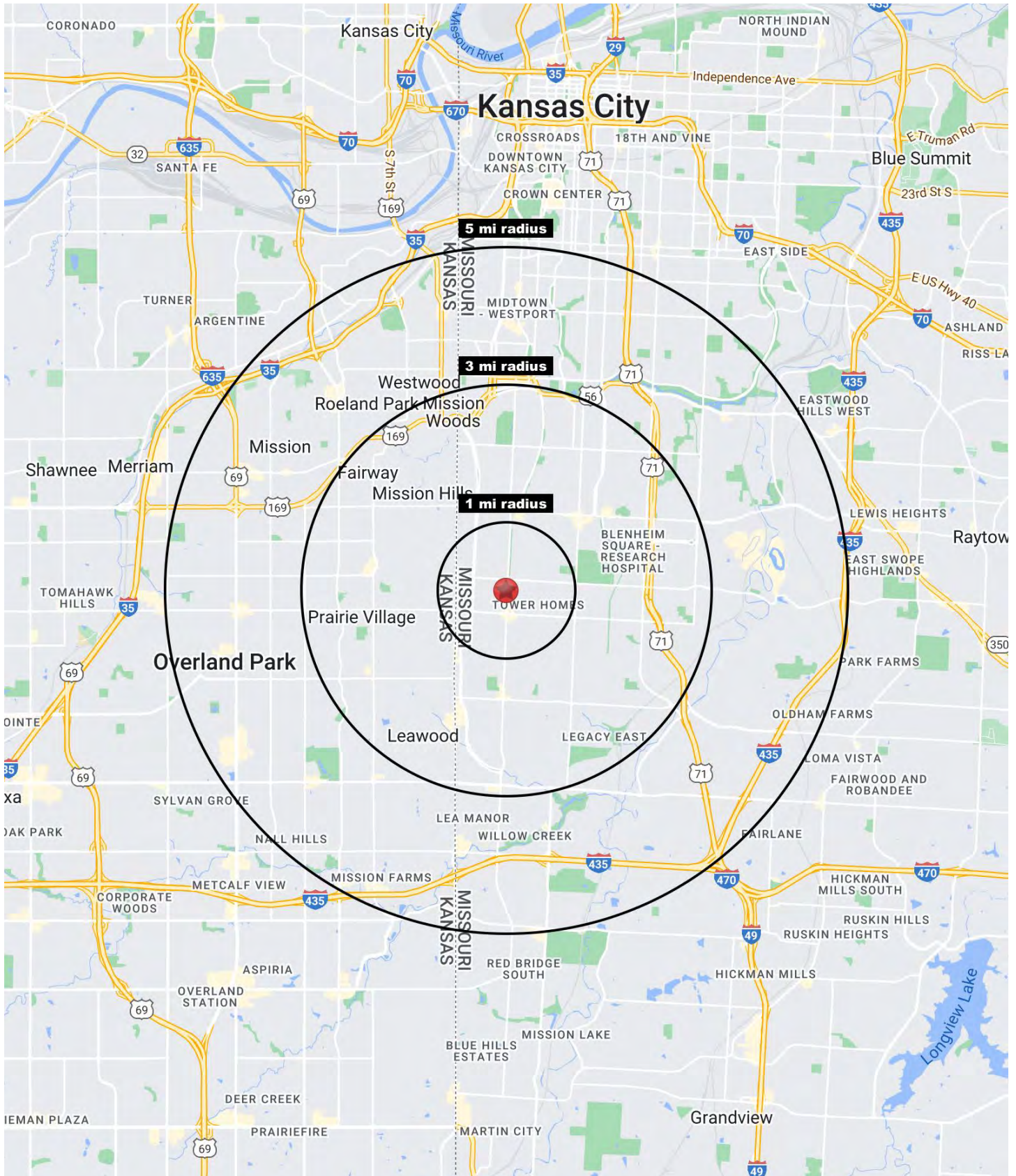
AERIAL



INTERIOR PHOTOS









RETAIL/OFFICE INVESTMENT

7208 Wornall Road, Kansas City, Missouri

7208 Wornall Road	1 mi radius	3 mi radius	5 mi radius
Kansas City, MO 64114			
Population			
2023 Estimated Population	14,651	101,828	246,063
2028 Projected Population	14,242	98,528	241,461
2020 Census Population	15,907	102,701	243,021
2010 Census Population	15,435	99,095	233,912
Projected Annual Growth 2023 to 2028	-0.6%	-0.6%	-0.4%
Historical Annual Growth 2010 to 2023	-0.4%	0.2%	0.4%
2023 Median Age	38.7	39.6	39.5
Households			
2023 Estimated Households	7,083	44,387	113,931
2028 Projected Households	6,779	42,376	110,917
2020 Census Households	7,549	45,099	112,639
2010 Census Households	7,230	43,592	107,968
Projected Annual Growth 2023 to 2028	-0.9%	-0.9%	-0.5%
Historical Annual Growth 2010 to 2023	-0.2%	0.1%	0.4%
Race and Ethnicity			
2023 Estimated White	85.2%	66.1%	64.8%
2023 Estimated Black or African American	7.3%	24.5%	23.4%
2023 Estimated Asian or Pacific Islander	1.8%	3.6%	3.3%
2023 Estimated American Indian or Native Alaskan	0.2%	0.2%	0.3%
2023 Estimated Other Races	5.5%	5.5%	8.2%
2023 Estimated Hispanic	5.0%	4.6%	8.2%
Income			
2023 Estimated Average Household Income	\$168,077	\$157,189	\$123,821
2023 Estimated Median Household Income	\$122,397	\$106,948	\$89,680
2023 Estimated Per Capita Income	\$81,283	\$68,663	\$57,472
Education (Age 25+)			
2023 Estimated Elementary (Grade Level 0 to 8)	0.3%	1.3%	1.7%
2023 Estimated Some High School (Grade Level 9 to 11)	1.1%	3.6%	3.6%
2023 Estimated High School Graduate	9.7%	16.0%	18.3%
2023 Estimated Some College	13.7%	16.4%	17.9%
2023 Estimated Associates Degree Only	4.7%	5.3%	5.9%
2023 Estimated Bachelors Degree Only	39.5%	32.5%	30.9%
2023 Estimated Graduate Degree	30.8%	24.9%	21.6%
Business			
2023 Estimated Total Businesses	816	4,502	12,060
2023 Estimated Total Employees	5,617	44,308	135,144
2023 Estimated Employee Population per Business	6.9	9.8	11.2
2023 Estimated Residential Population per Business	18.0	22.6	20.4

©2024, Sites USA, Chandler, Arizona, 480-491-1112 Demographic Source: Applied Geographic Solutions 11/2023, TIGER Geography - RS1